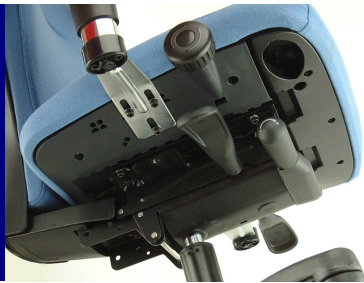


RGE Universal Structural Seat

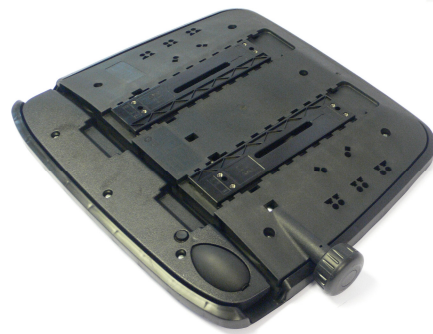
Ergonomic Structural Seat pan with integral seat slide



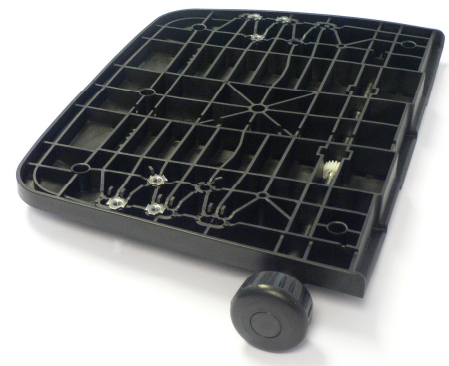
General Description

An ergonomic structural seat designed for a range of office furniture components. The RGE Universal Structural Seat (USS) incorporates many patented features that form the basis of a high quality office chair. Manufactured from glass reinforced polymer the seat is designed for a range of arms to be mechanically fixed directly to the seat give greater flexibility to the office chair manufacturer and their choice of mechanisms.

The passive waterfall™ option creates a flexing front lip on the structural seat to provide a pressure reduction to the underneath of the user's legs. The feature comes as standard and allows a thin elegant profile of seat with maximum ergonomic comfort.



- Integrated Seat Slide with 76mm travel
- Patented design
- Specially designed slides allow fine adjustment with rotary knob control **whilst** seated
- Unique thin elegant profile made possible by the passive waterfall
- Passive Waterfall (optional) relieves under-leg pressure
- Upholstery Management system creates a visually attractive and neat chair underside
- Optional integrated lumbar pump
- Custom design – possibility to have bespoke control knob for OEM Chair manufacturer
- Designed for ease of Manufacture with snap-in T-Nut fixings and drawstring upholstery method
- Interfaces with a range of mechanisms with 153mm, 170mm and 200mm width hole centres
- Interfaces with all RGE catalogue adjustable and fixed arms
- Matching moulded structural seat foam available



RGE Engineering Co., Bridge Works, The Avenue, Godmanchester, CAMBS. UK

Tel: +44 (0) 1480 450771

Fax: +44 (0) 1480 411359

Email: Sales@rgegroup.com

www.rgegroup.com



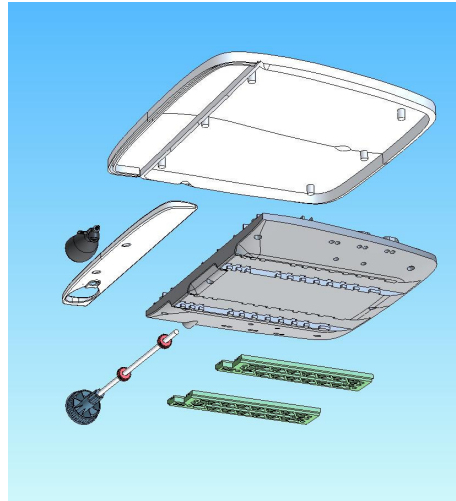
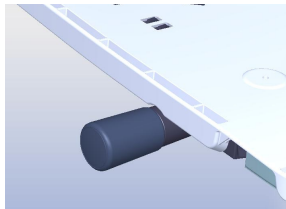
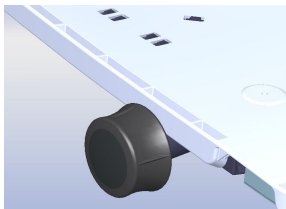
Universal Structural Seat with Seat Slide

Product Code	Description	
USS-WS00	Seat pan with slide sub assembly inc. Standard control knob, Cap, rod, gears (x2), spring, washer, pin	
USS-SL00	Slider LH	
USS-SL01	Slider RH	
USS-UC00	Upholstery Carrier with waterfall	
or,		
USS-UC01	Upholstery Carrier without waterfall	User defined
USS-WC00	Waterfall Cover Without Lumbar pump aperture	
or,		
USS-WC01	Waterfall Cover with Pump aperture	User defined

Universal Structural Seat Fixed (no seat slide)

USS- NS00	Seat pan, no slide	
USS-UC00	Upholstery Carrier with waterfall	
or,		
USS-UC01	Upholstery Carrier without waterfall	User defined
USS-WC00	Waterfall Cover Without Lumbar pump	
or,		
USS-WC01	Waterfall Cover with Pump	User defined

- A unique and groundbreaking design for ergonomic office chairs. In order to fully appreciate the many features and functions of this product please contact RGE for a full demonstration
- Available with different rotary knob control designs. RGE can produce twin-shot knob design with soft touch finish to client's requirements



RGE Engineering Co., Bridge Works, The Avenue, Godmanchester, CAMBS. UK

Tel: +44 (0) 1480 450771

Fax: +44 (0) 1480 411359

Email: Sales@rgegroup.com

www.rgegroup.com

